



Introducing **LA GUADALUPE**

110 SOUTH BOYLE AVE, LOS ANGELES, CA 90033

SOUTH EAST CORNER OF 1ST STREET AND BOYLE AVENUE
BOYLE HEIGHTS, LOS ANGELES



Vanessa Delgado
Lic # 01910425
Tel: 323.477.1160
vanessa@azuredevelopmentco.com



Paul Collins
Lic # 01392835
Tel: 858-254-8858
paul@highlandpartnerscorp.com



110 South Boyle Ave, Los Angeles, CA 90033



ABOUT LA GUADALUPE

La Guadalupe is a 60,000 square foot five-story mixed-use building comprised of 44 housing units, 7,100 square feet of ground floor retail with open space, 41 parking stalls, and 56 bicycle parking stalls. The project will also include a shared community room, a sky deck and a courtyard with BBQs for residents.

ABOUT THE DEVELOPER

Azure Development is focused on creating transformational projects with integrity. Our team brings an expression of hope to each site and are empowered to customize each project for its surroundings. We understand that each building must work in harmony with the community and nature to thrive.

Azure encourages its employees to create innovative buildings in a team-based environment. All projects feature an attention to detail and respect for area residents. Our core values of integrity, creativity and community drives our mission and each task that we commit to.

The firm is certified as a small and minority business and is women owned.

www.azuredevelopmentco.com



FOR LEASING INFORMATION:

Paul Collins
Lic # 01392835
Tel: 858-254-8858
paul@highlandpartnerscorp.com





LA GUADALUPE Ground Floor Retail

FIRST OF ITS KIND - FOR LEASE OPPORTUNITY

THE GROUND FLOOR RETAIL IS A TOTAL OF 7,100 SQUARE FEET THAT WILL BE SUBDIVIDED INTO THREE SUITES. THE SPACES HAVE BEEN DESIGNED TO ALLOW FOR RETAIL OR RESTAURANT USES.

PROJECT FEATURES

- The site is .1 miles away from the 101 Freeway and .4 miles from the 10 Freeway. La Guadalupe is less than a mile away from Downtown Los Angeles, across the historic 1st street bridge.
- Project is surrounded by regional amenities such as a metro station, housing developments, hospital, schools, parks, banks, etc.
- Designed in modern architecture with the ground floor wrapped in brick to match historic buildings in the area. The project also incorporates a mural with an Otomi pattern.
- 13 parking spaces dedicated to commercial uses only plus ample street and bicycle parking.
- Located immediately across from Mariachi Plaza and Metro's Gold Line Station.
- Great opportunity for a local business looking to relocate or an existing small business to grow.
- **Opening Q1 2025**

FOR LEASING INFORMATION:



PAUL COLLINS | LIC # 01392835 | TEL: 858-254-8858 | PAUL@HIGHLANDPARTNERSCORP.COM





THE TRADE AREA

“La Guadalupe” is situated directly across the street from the Historic Mariachi Plaza and Metro’s Gold Line station on the southeast corner of East First Street and Boyle Avenue in Boyle Heights (Los Angeles), California.

DEMOGRAPHICS

- **Traffic count** at the intersection of 1st and Boyle is 17,171, 123,000 at the 101 Freeway exit and 127,655 at the nearby Santa Ana Freeway exit.
- The project is across the street from the regional **White Memorial Hospital** with 1,879 employees, nearly 700 volunteers, 462 physicians, and 86 medical residents.
- Boyle Heights is a historically Hispanic community which is over 90 percent Latino, **rich in culture**, music, and the art that brings together the community and mariachi lovers.
- **356,700 people** within a 3-mile radius with average household **income of \$60,000**.
- Average household size of 3.27.

FOR LEASING INFORMATION:

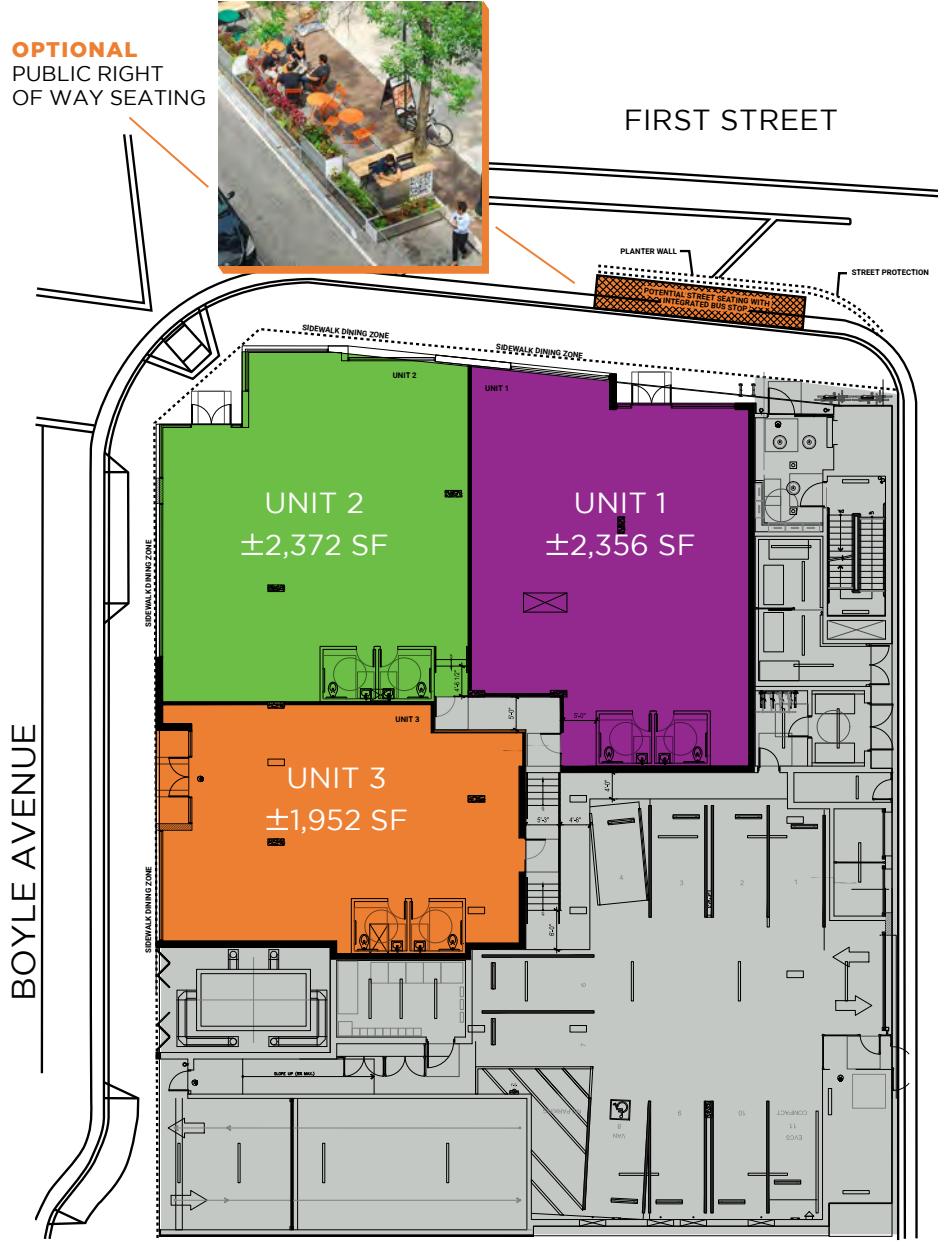


PAUL COLLINS | LIC # 01392835 | TEL: 858-254-8858 | PAUL@HIGHLANDPARTNERSCORP.COM





THREE TENANT FLOOR PLAN



	TOTAL (SF)	IN. DINING (SF)	OUT DINING (SF)	KITCHEN (SF)	RESTROOMS (SF)
UNIT 1	±2,356	1,698	95	780	266
UNIT 2	±2,372	1,074	210	575	265
UNIT 3	±1,952	1,056	74	560	234

FOR LEASING INFORMATION:



PAUL COLLINS | LIC # 01392835 | TEL: 858-254-8858 | PAUL@HIGHLANDPARTNERSCORP.COM





TENANT SIGNAGE

SAMPLE SIGNAGE*

EYEBROW SIGNS



BLADE SIGNS

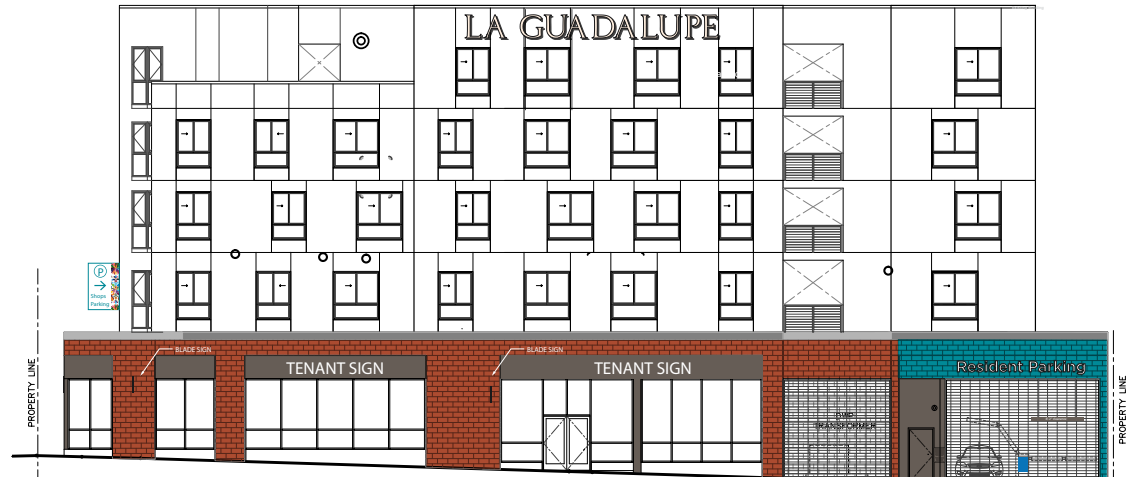


Representation Purposes Only
Subject to Change.
Brokers make no representation.*

FIRST STREET VIEW



BOYLE AVENUE VIEW



FOR LEASING INFORMATION:



PAUL COLLINS | LIC # 01392835 | TEL: 858-254-8858 | PAUL@HIGHLANDPARTNERSCORP.COM





Introducing **LA GUADALUPE**

110 SOUTH BOYLE AVE, LOS ANGELES, CA 90033

SOUTH EAST CORNER OF 1ST STREET AND BOYLE AVENUE, BOYLE HEIGHTS, LOS ANGELES

FOR LEASING INFORMATION:



Paul Collins
Lic # 01392835 | Tel: 858-254-8858
paul@highlandpartnerscorp.com

HIGHLAND PARTNERS CORP. | 880 APOLLO STREET, SUITE 329 | EL SEGUNDO, CA 90245 | WWW.HIGHLANDPARTNERSCORP.COM

© 2023 | Highland Partners Corp. | The information being provided by Highland Partners Corp. and/or its sources is deemed reliable. While we have no reason to doubt its accuracy, we do not guarantee it. Any information, measurements, facts and actual drawings shown are approximate, subject to change, or withdrawal without notice and should be independently verified by you and may not be relied upon as a precise representation by this office. No warranties or representations are made as to the condition of the property or any hazards contained therein nor any to be implied. | Logos are for identification purposes only and may be trademarks of their respective companies. LaGuadalupe_Bro_v03.indd | 12/23

